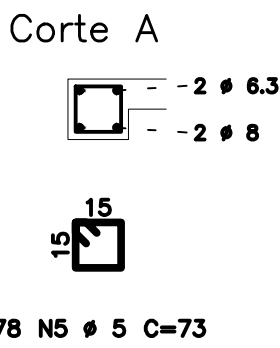
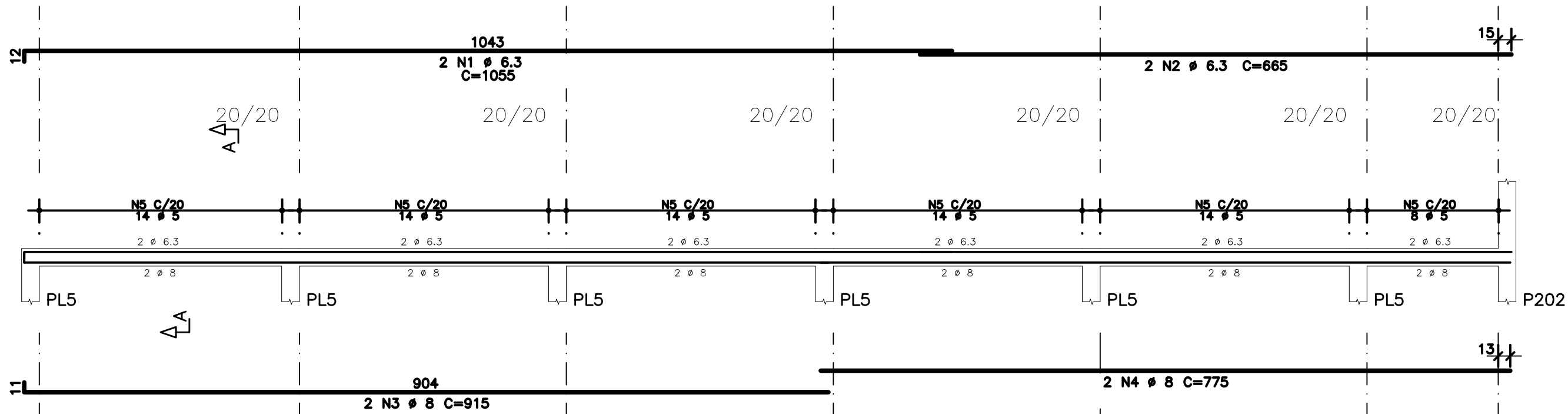
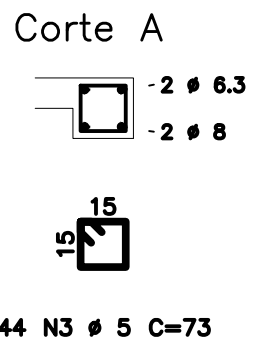
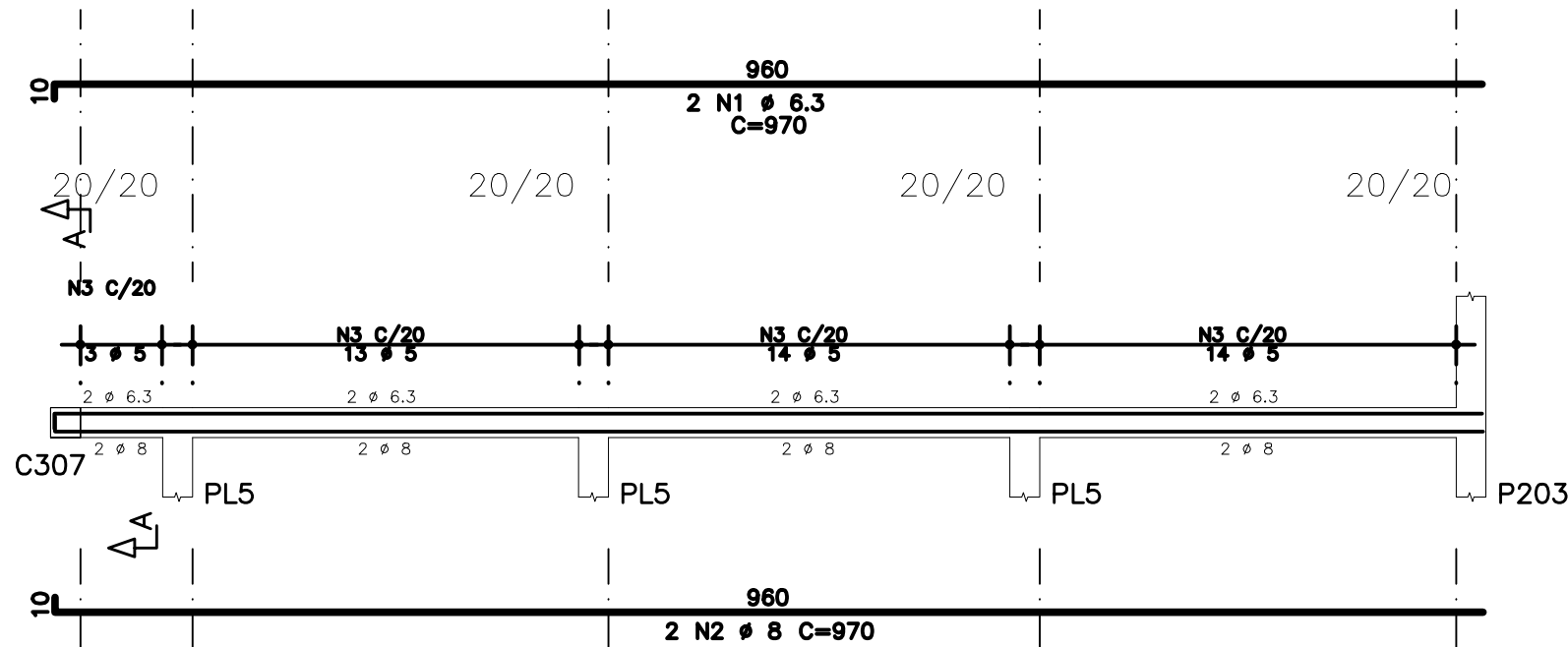


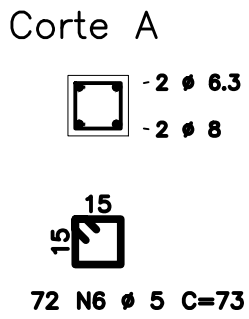
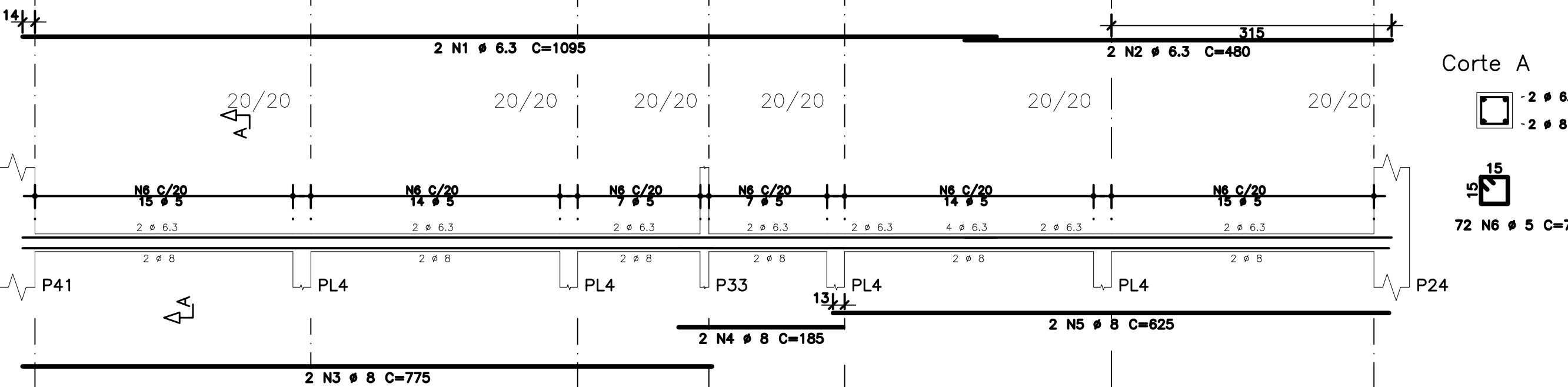
C308



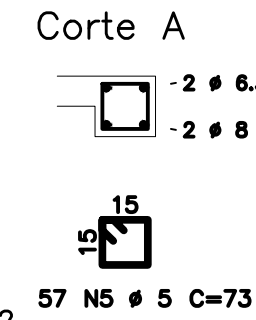
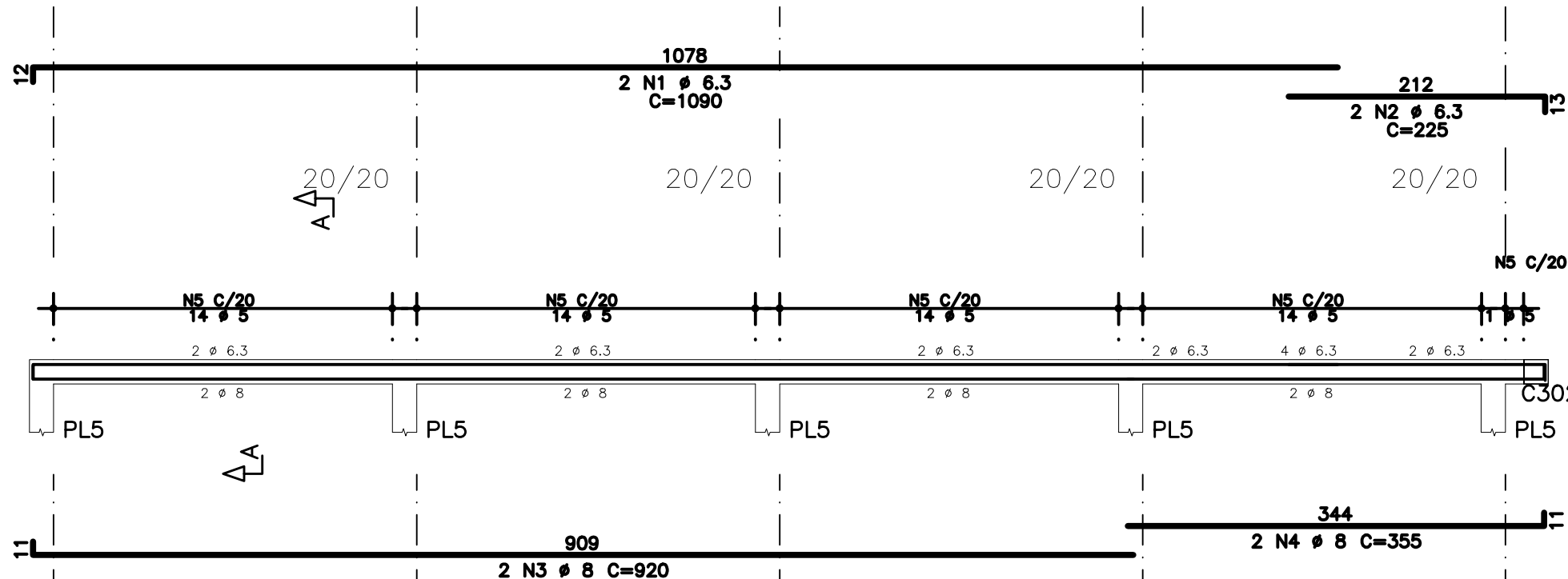
C303



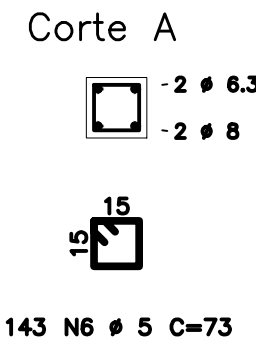
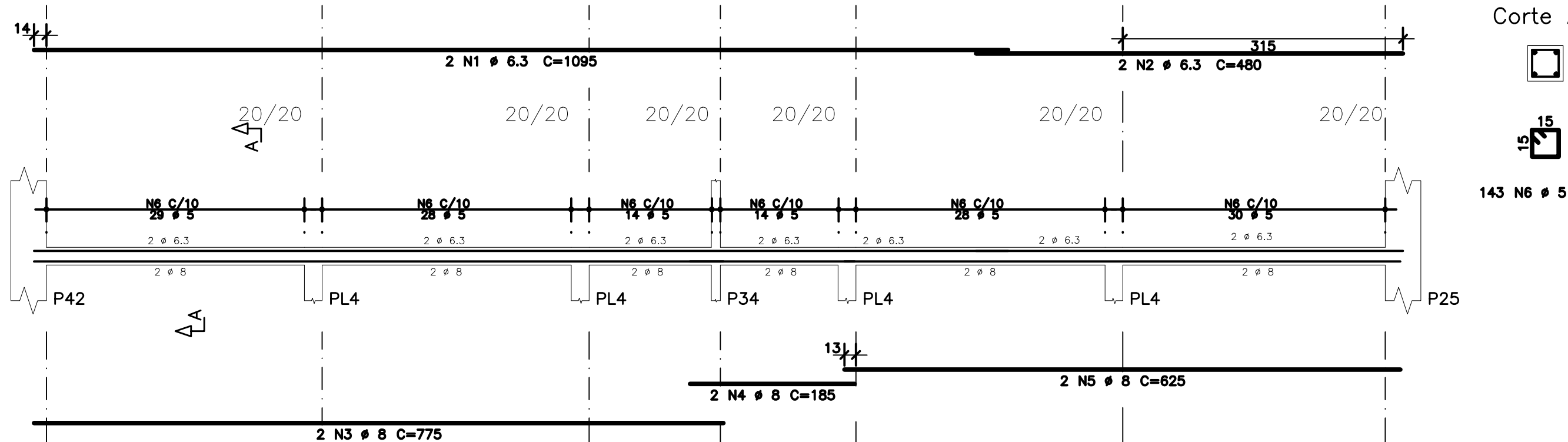
C309



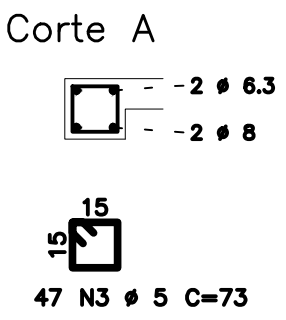
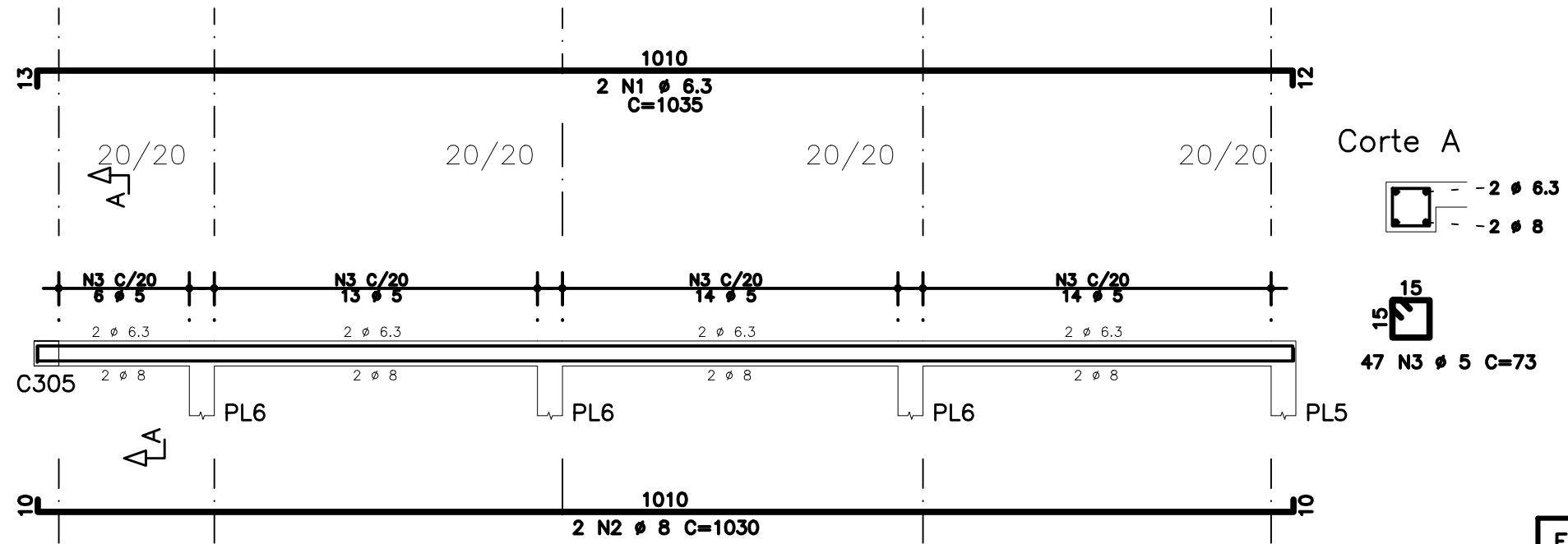
C312



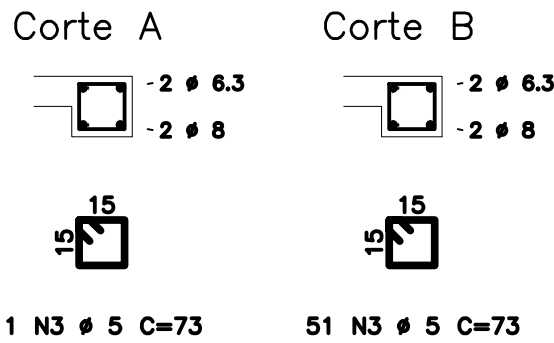
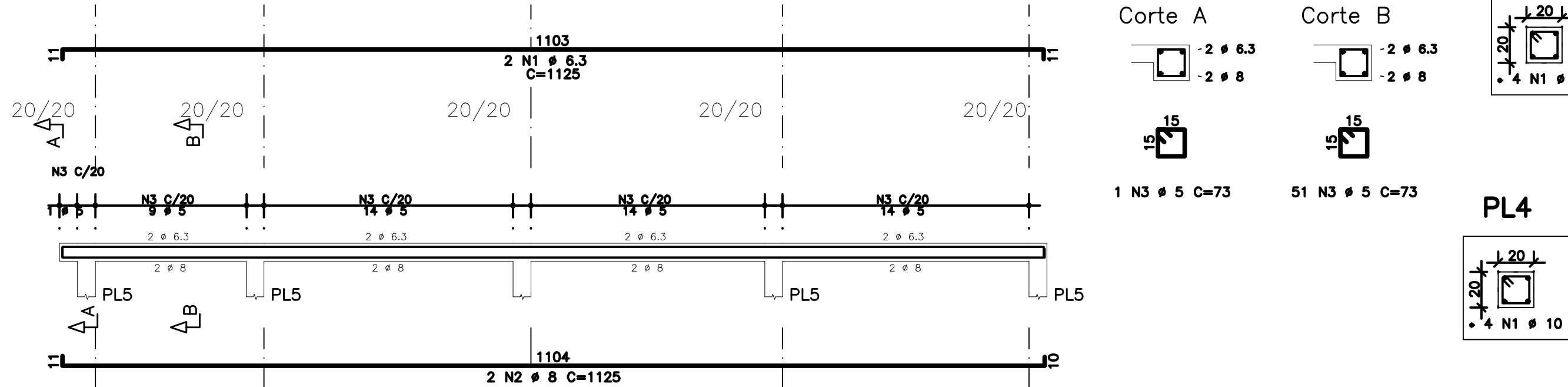
C310



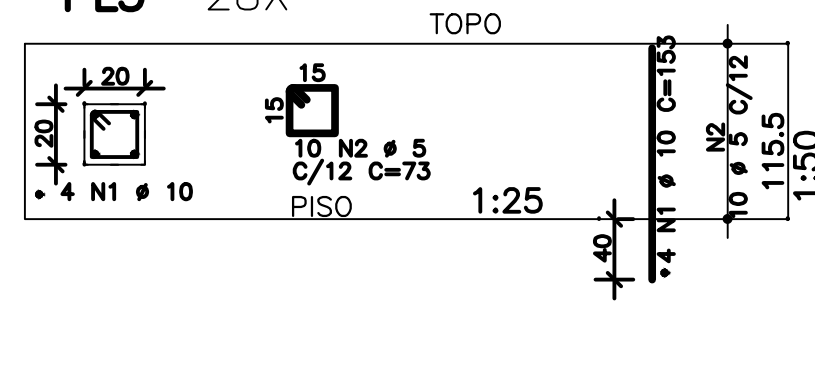
C304



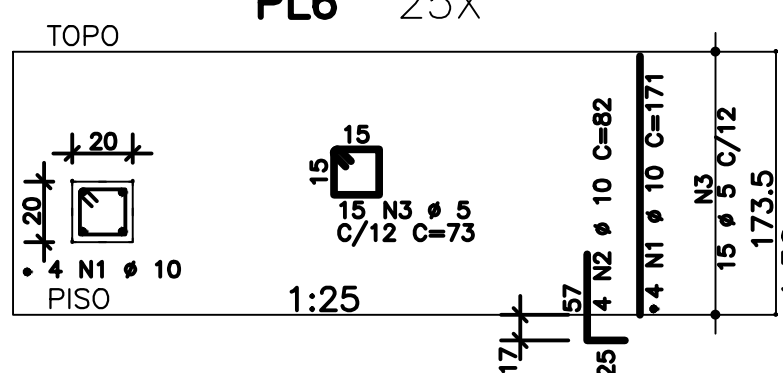
C311



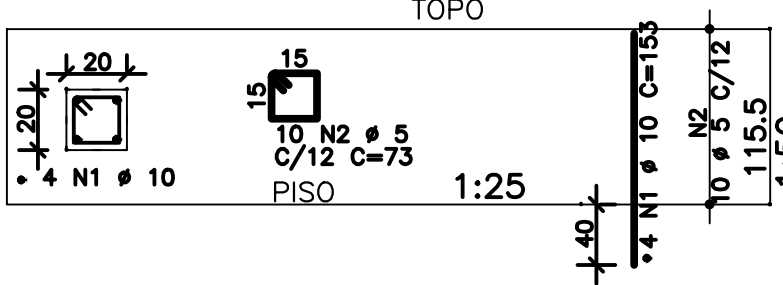
PL5 28X



PL6 25X



PL4 8X



AÇO	POS	BIT	QUANT	COMPRIMENTO	
				UNIT	TOTAL
		mm		cm	cm
C303	50A	1	6.3	2	970
	50A	2	8	2	970
	60A	3	5	44	73
C304	50A	1	6.3	2	1035
	50A	2	8	2	1030
	60A	3	5	47	73
C308	50A	1	6.3	2	1055
	50A	2	6.3	2	665
	50A	3	8	2	915
	50A	4	8	2	775
	60A	5	5	78	73
C309	50A	1	6.3	2	1095
	50A	2	6.3	2	480
	50A	3	8	2	775
	50A	4	8	2	185
	50A	5	8	2	625
	60A	6	5	72	73
C310	50A	1	6.3	2	1095
	50A	2	6.3	2	480
	50A	3	8	2	775
	50A	4	8	2	185
	50A	5	8	2	625
	60A	6	5	143	73
C311	50A	1	6.3	2	1125
	50A	2	8	2	1125
	60A	3	5	52	73
C312	50A	1	6.3	2	1090
	50A	2	6.3	2	225
	50A	3	8	2	920
	50A	4	8	2	355
	60A	5	5	57	73
PL4 (XB)	50A	1	10	32	153
	60A	2	5	80	73
PL5 (X28)	50A	1	10	112	153
	60A	2	5	280	73
PL6 (X25)	50A	1	10	100	171
	50A	2	10	100	82
	60A	3	5	375	73

RESUMO DE AÇO			
AÇO	BIT	COMPR	PESO
	mm	m	kgf
60A	5	886	138
50A	6.3	186	46
50A	8	185	73
50A	10	473	292
Peso Total 60A =			138 kgf
Peso Total 50A =			411 kgf

EXE	01	AVALIAÇÃO DE CONFORMIDADE	EFICÁCIA	18/12/20
EXE	00	PROJETO EXECUTIVO – LICITAÇÃO OBRA	EFICÁCIA	31/07/20
REVCOMP	02	REVISÃO PROJETO EXECUTIVO – REF EXE 2	EFICÁCIA	24/07/20
REVCOMP	01	REVISÃO PROJETO EXECUTIVO – REF EXE	EFICÁCIA	03/07/20
REVCOMP	00	EMISSION INICIAL EXECUTIVO	EFICÁCIA	25/04/20
ANT	01	REVISÃO ANTEPROJETO	EFICÁCIA	20/02/20
ANT	00	EMISSION INICIAL ANTEPROJETO	EFICÁCIA	21/11/19
TIPO	REV	DESCRIÇÃO	DESENHO	DATA

REVISÕES			
MINISTÉRIO PÚBLICO DO ESTADO DE MINAS GERAIS SEDE DAS PROMOTORIAS DE JUSTIÇA DE JUIZ DE FORA			
ENDEREÇO: RUA JOSÉ CALIL AHOUGI, LOTE F, BAIXADA DO PARAIBUNA		ÁREA TERRENO: 2.996,30m2	
PROPRIETÁRIO: PROCURADORIA GERAL DE JUSTIÇA DO ESTADO DE MINAS GERAIS		ÁREA CONSTRUÍDA: 7.266,36m2	
		CNPJ: 20.971.057/0001-45	
PROJETO DE ESTRUTURA DE CONCRETO ARMADO			
EMPRESA: ENGENHEIRO FABRÍCIO SILVA LIMA CREA: 80.082/D-MG EFICÁCIA PROJETOS E CONSULTORIA LTDA		CNPJ: 06.301.115/0001-00	
RESPONSÁVEL TÉCNICO: NELSON URIAS PINTO GARIGLIO DA SILVA		CREA: 82.624/D-MG	
CONTEÚDO: VERGA E CONTRAVERGA 3o AO 6o PAVIMENTO – 02/03 ARMAÇÃO DOS PILARETES		DATA: 18/12/20	FOLHA: 116/126
		ESCALA: INDICADA	